

# NIHAVEND ŞARKI

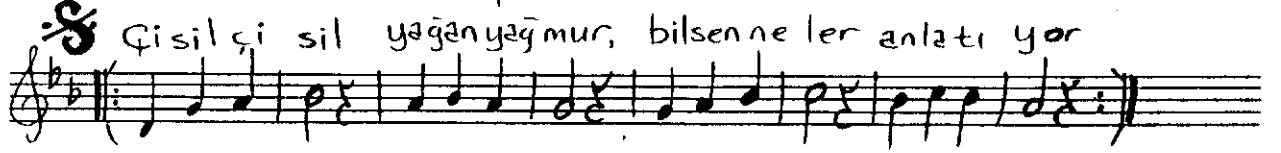
SÖZ VE MÜZİK

Semâi

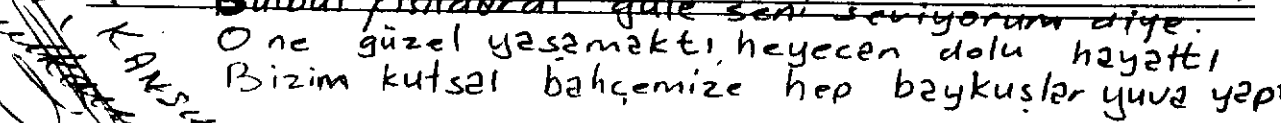
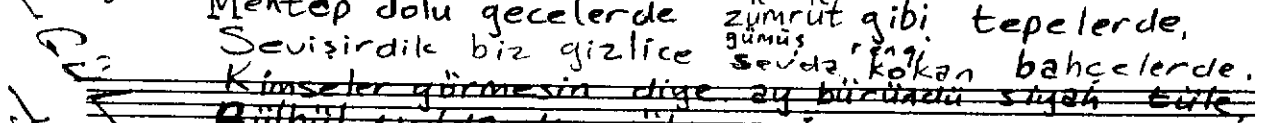
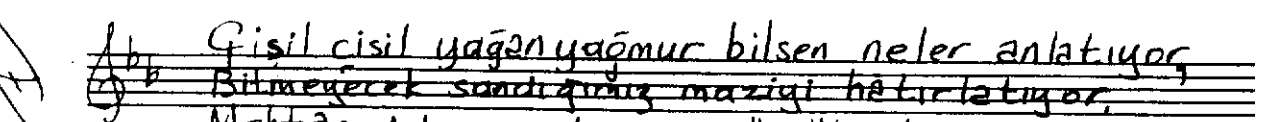
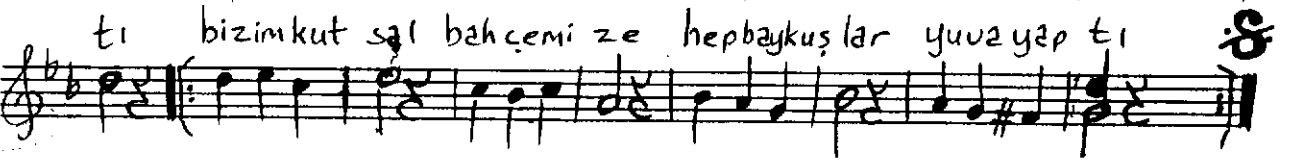
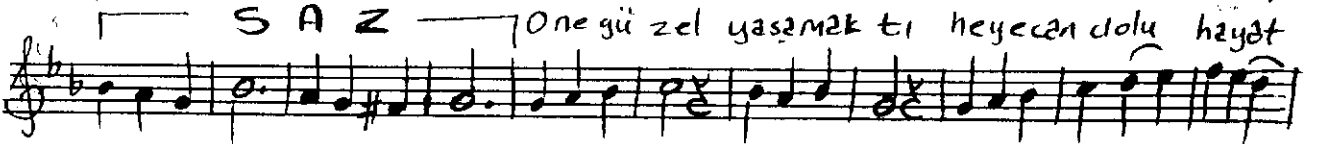
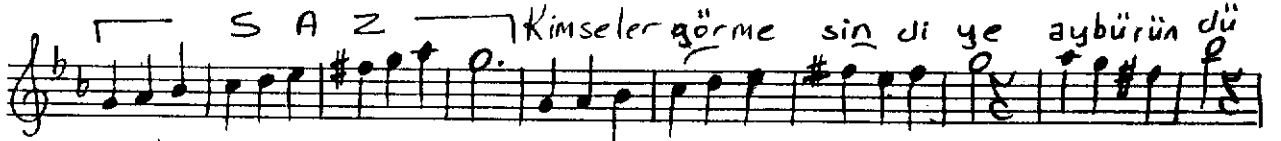
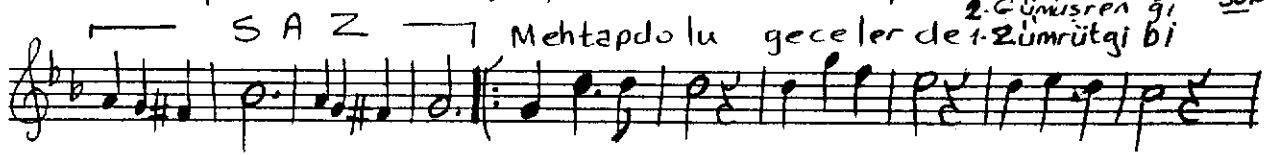
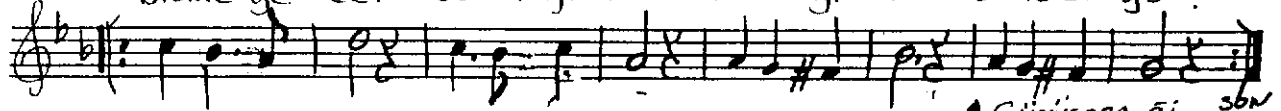
Çisil çisil yağan yağmur GÜL KANSU



ARANAGME



bitmeye cek sandı ğı mız mazi ği hâ tırlatı yor.



Çisil çisil yağan yağmur bilsen neler anlatıyor,

Bilmeyerek sandığımız maziği hatırlatıyor,

Mehtap dolu gecelerde zümrüt gibi tepelerde,

Sevişirdik biz gizlice <sup>gümüş</sup> sevdâ kâkan bahçelerde.

Kimseler görmesin diye ay bürün dü siyah tüle,

Bülbül <sup>gümüş</sup> dardı güle seni seviyorum diye.

Öne güzel yaşamaktı heyecan dolu hayatı

Bizim kutsal bahçemize hep baykuşlar yuva yaptı.